



CONNECTED  
BY COMPETENCE

# COMPANY PROFILE OF THE ERNI GROUP



ED. 04 | 02.2020

Catalog E 074681



# Company Profile

## ■ VISION & VALUES.



### ERNI VISION

- ERNI is the performance leader for electronic connectivity solutions in selected market segments.
- We are close to our customers and know their expectations better than the competition.
- Our solutions, quality and speed set us apart.
- We grow in a sustainable manner and react flexibly to market changes.
- We offer an inspiring and motivating environment in which our employees can develop their strengths.
- We are an international family-owned company. Together we achieve more!

### ERNI VALUES

The values of ERNI are the cornerstone of our cooperation with our customers and business partners. They are the guidelines for our actions and the basis for decision-making, and highlight our uniqueness and directions of action. Our values must be observed and implemented at any time and at any place.

#### Result-Oriented

Our actions are result-oriented. We set challenging goals and take responsibility for the results achieved.

#### Respect

In working together we show appreciation and respect. We support each other.

#### Sustainability

We act sustainably and responsibly. We have vision yet remain practical and flexible when change is needed.

#### Innovation

Our curiosity and openness guides us onto new paths. We challenge the status quo and learn from our mistakes.

#### Dr. Christoph Weiss

Board of Directors Delegate

# Company Profile

## ■ LEADERSHIP PRINCIPLES.

### ERNI LEADERSHIP PRINCIPLES

Our leadership principles are based on our values and clearly express the expected behavior of management. In the daily interactions among managers and employees, a work environment is created, in which all can perform at their best and develop themselves. Our leadership principles allow us to achieve more together.

#### **We are role models**

We take our role model function seriously and lead authentically. In dealing with one another, we are straightforward and pragmatic. We lead with our hearts and minds.

#### **We see management as a collaborative responsibility**

We take a holistic approach to business objectives. We promote and demand international cooperation. We see our success as a result of joint efforts. We live a regular exchange of knowledge and know-how and support each other.

#### **Our actions are result oriented**

Customer and employee satisfaction, quality and financial success are our goals on which we set performance expectations with our employees. Our pragmatic, sustainable actions are in line with our processes and strategy.

#### **We communicate on the same level**

Open, clear and respectful communication is integral to our corporate culture. We ask questions, listen attentively and proactively inform. We talk to each other instead of about each other.

#### **We empower our employees**

We want strong employees who challenge us as leaders, and we use their potentials. We support their development and give them honest feedback.

#### **We take every opportunity to learn**

We learn continuously and deal constructively with mistakes. Criticism or conflict is seen as an opportunity to improve. We actively request feedback, thus creating a trusting and open atmosphere across all levels.

#### **We decide responsibly**

We define the decision-making scope and encourage our employees to make their own decisions. We take clear decisions and take account of the potential impact on other areas.

#### **We inspire people about our ideas**

We have a positive, open approach and are committed to our projects. By way of professional expertise and passion we persuade and inspire our clients, business partners, employees and colleagues.

# Company Profile

## ■ ABOUT ERNI.



**5 manufacturing  
plants globally**



**Over 40 offices  
worldwide**



**Over 1,300  
employees  
worldwide**

ERNI is an international, family-owned company of swiss origin, with more than 70 years experience as a leading global manufacturer and service provider. Spanning over 40 countries and state-of-art manufacturing facilities in Europe, North America and in Asia Pacific, ERNI is well positioned to respond to changes quickly in a rapidly growing market with increasingly complex requirements. Today, ERNI International AG, the headquarter located in Switzerland, has over 1,300 employees globally with an annual sale of Euros 207 million.

ERNI develops and manufactures a wide variety of electronic connectivity solutions for various areas of applications. An emphasis is on connectors for the automotive area and industrial automation. Under extreme conditions, it is especially important for electrical connections to work reliably. ERNI offers a broad range of automotive connectors for headlight systems, battery management systems and power electronics, and other applications such as assistance and security systems. For the automation sector, ERNI presents powerful connector solutions for programmable logic controllers (PLC), remote I/O systems, drives, and other future-oriented industrial applications.

Furthermore, ERNI supplies other industries with high quality connector solutions, cable assemblies, cable enclosures and more. Our teams of highly experienced Sales Engineers around the world and partnering with leading distributors enable us to be closer to our customers, providing the ideal solutions to their needs.



# Company Profile

## COMPANY HISTORY & YEARLY TIMELINE.

**1947**



“ERNI & CO.” were found in Nänikon, Switzerland.

**1966**



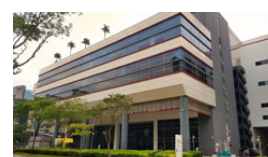
ERNI built its first manufacturing plant in Seestrass, Germany.

**1989**



ERNI presents the SMC line, which guarantees a reliable data transfer. This enables us to perpetrate the industrial automation sector furthermore.

**1996**



“ERNI Asia Holding Pte Ltd”, founded in Singapore, is the headquarter office for Asia Pacific.

**1956**



“ERNI Elektroapparate GmbH” in Adelberg, Germany is established.

**1968**



ERNI successfully manufactured DIN 41612, the world’s first high density backplane connector.

**1993**



Setting its footprints in USA, ERNI’s head-quarters and main production is built in Chester, Virginia, which will be relocated to Richmond, USA later on.

**2002**



ERNI develops the MicroSpeed and thus laid the foundation for a highly EMC compliant connector for industrial PLC applications.

# Company Profile

## COMPANY HISTORY & YEARLY TIMELINE.

**2006**



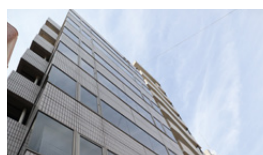
ERNI presents the MiniBridge connector, which is ideal for use in LED modules. This enables us to enter the automotive market.

**2010**



ERNI establishes its presence in Asia-Pacific with its first branch office in Beijing, China.

**2014**

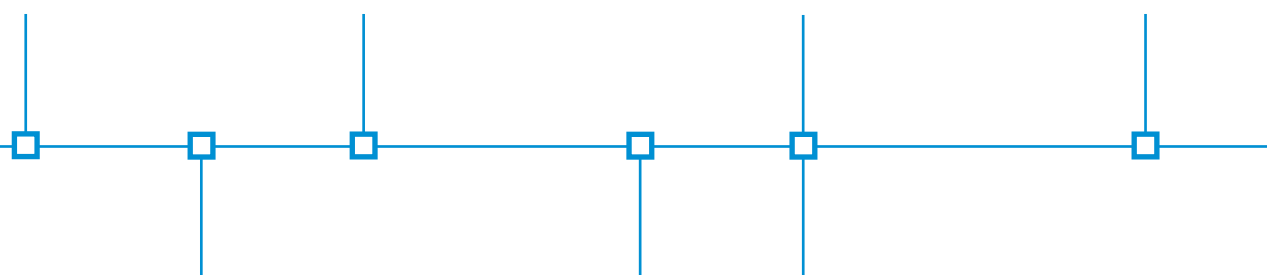


“ERNI Electronics K.K.” was established in Tokyo, Japan.

**2018**



The existing branches in Shenzhen, Beijing and Shanghai will be united under one name, „ERNI Electronics (Shanghai) Co., Ltd.“



**2008**



The new company building in Brüttisellen, Switzerland is inaugurated and becomes the new headquarter of “ERNI International AG“.

**2013**



ERNI acquired cable manufacturer Abotron AG Switzerland with its subsidiary in Lamphun, Thailand is now known as “ERNI Electronics (Thailand) Co., Ltd”.

**2014**

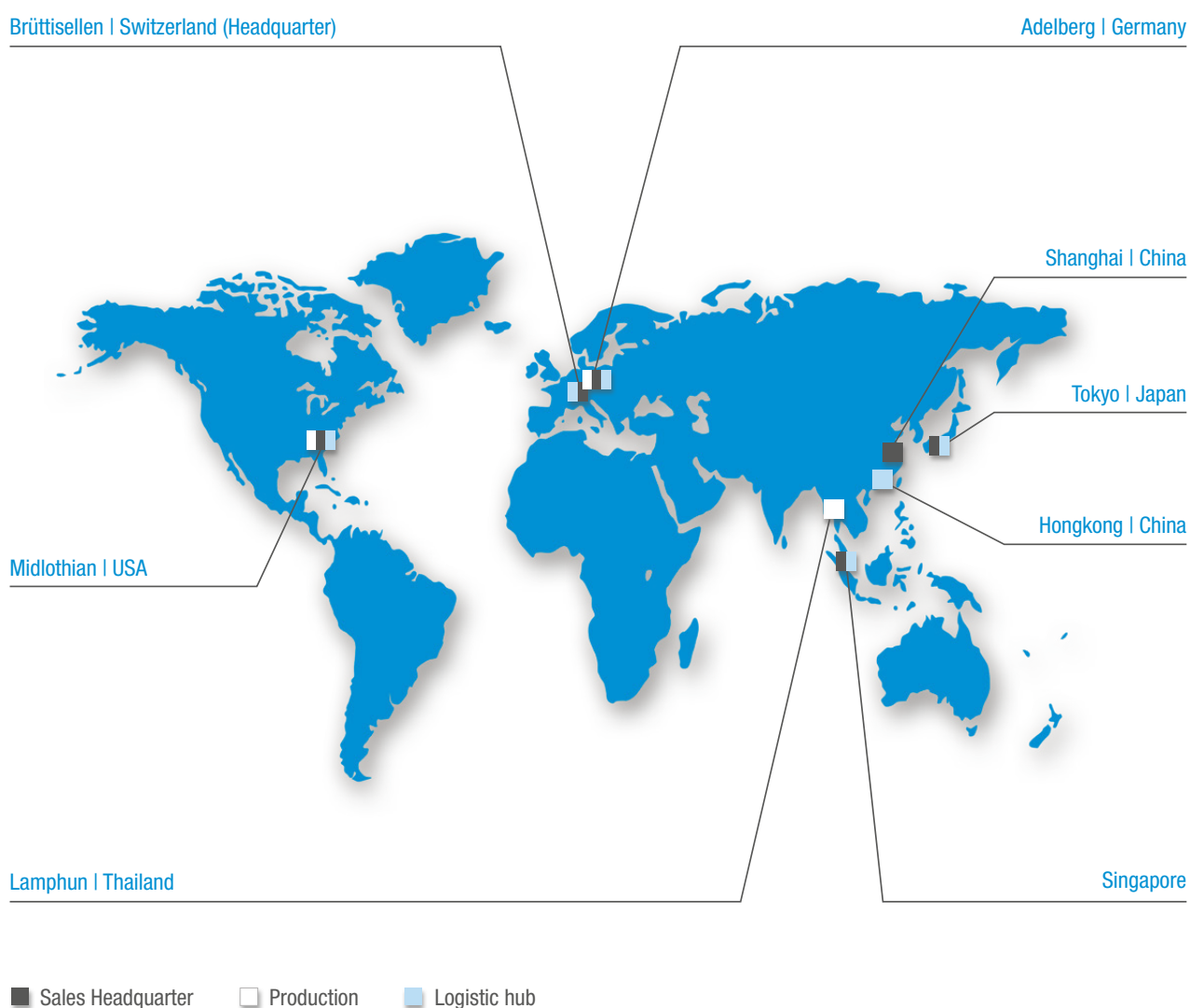


ERNI expands its foot prints in Shenzhen, China, with another branch office.

## Company Profile

### GLOBAL NETWORKS.

ERNI has over 40 sales offices globally, with headquarter offices in Switzerland, Germany, USA, China, Singapore and Japan, and owns state-of-art manufacturing facilities around the world. Our global presence and partnering with leading distributors enable us to deliver the best possible solutions for complex requirement and applications, exceeding customers' expectations.



# Company Profile

## ■ GLOBAL NETWORKS.

### EUROPE AND USA

#### Switzerland | Zürich

ERNI International AG  
ERNI Electronics AG  
Zürichstrasse 72  
8306 Brüttisellen - Zürich, Switzerland  
Tel. ERNI International AG: +41 44 835 33 91  
Tel. ERNI Electronics AG: +41 44 835 33 83  
Email ERNI International AG: [info@erni.com](mailto:info@erni.com)  
Email ERNI Electronics AG: [info.EET@erni.com](mailto:info.EET@erni.com)

#### Germany | Adelberg

ERNI Electronics GmbH & Co. KG  
ERNI Production GmbH & Co. KG  
Seestrasse 9, Ziegelhau 25  
73099 Adelberg, Germany  
Tel: +49 7166 50 0  
Email: [info@erni.com](mailto:info@erni.com)

#### USA | Midlothian VA

ERNI Electronics Inc.  
2400 ERNI Way  
Midlothian, VA 23112, USA  
Tel: +1 804 228 4100  
Email: [info.EEL@erni.com](mailto:info.EEL@erni.com)

### ASIA PACIFIC

#### China | Shanghai

ERNI Electronics (Shanghai) Co., Ltd  
88 Keyuan Road, Unit 725, 2nd Floor  
Zhangjiang Hi-Tech Park  
201203 Pudong, Shanghai, China  
Tel: +86 21 6089 7007  
Email: [info.ECN@erni.com](mailto:info.ECN@erni.com)

#### Singapore

ERNI Asia Holding Pte Ltd  
23A Serangoon North Avenue 5 #04-11  
Singapore 554369  
Tel: +65 6 555 5885  
Email: [info.EAH@erni.com](mailto:info.EAH@erni.com)

#### Japan | Tokyo

ERNI Electronics K.K.  
3-20-9 Shibaura Minato-ku  
108-0023 Tokyo, Japan  
Tel: +81 3 6453 9122  
Email: [info.EJP@erni.com](mailto:info.EJP@erni.com)

## Company Profile

### ■ ERNI FACTORIES.

ERNI has factories in Europe, North America and Asia Pacific. To provide high quality products with excellent design and consistent performance are the core focus of our quality management system. From designing to producing a connector, every step is closely supervised to ensure the highest quality output.



#### **Germany | Adelberg**

ERNI Electronics GmbH & Co. KG  
 ERNI Production GmbH & Co. KG  
 Seestrasse 9, Ziegelhau 25  
 73099 Adelberg, Germany  
 Tel: +49 7166 50 0  
 Email: [info@erni.com](mailto:info@erni.com)



#### **Thailand | Lamphun**

ERNI Electronics (Thailand) Co., Ltd  
 179 Moo 4 T. Ban Klang, A. Muang  
 Lamphun 51000, Thailand  
 Tel: +66 53581750  
 Email: [info.ETH@erni.com](mailto:info.ETH@erni.com)

#### **USA | Midlothian VA**

ERNI Electronics Inc.  
 2400 ERNI Way  
 Midlothian, VA 23112, USA  
 Tel: +1 804 228 4100  
 Email: [info.EEL@erni.com](mailto:info.EEL@erni.com)

## Company Profile

### CERTIFICATIONS.



ERNI has achieved leading standards in many aspects such as quality, efficiency and production process, and makes continuous improvement with the objective of “Zero Defect”. ERNI complies to various international standards such as REACH, RoHS, conflict mining and more. All our certificates are available at [erni.com/certificates](http://erni.com/certificates).

#### PRODUCT CERTIFICATIONS

- USCAR for several connectors
- LV214 for several connectors
- Bellcore certification for several connectors
- UL Underwriter Laboratories Inc., file No. E472031, E145613, E84703, E325697, E478662

#### QUALITY MANAGEMENT CERTIFICATIONS

- IATF 16949:2016
- ISO 9001:2015
- ISO 14001:2015
- UL Underwriter Laboratories Inc., file No. E335534, E335340, E258941, E332028

## Company Profile

### ERNI MARKETS.

Our years of experience in design and development have made us your most ideal partner. Our wide range of product line caters to the solutions you need in developing your products and satisfies your particular needs for reliability, safety and efficiency. With the highly mechanized and automated production with sophisticated and near-optimal performance, ERNI has the solutions to your needs.



#### AUTOMOTIVE

ERNI connectors for **headlight systems, battery management systems** and **power electronics** have passed various stringent performance and quality test in accordance to the Automotive standards.



#### AUTOMATION

Our connectors are durable, offering reliable and secure connections in the most challenging conditions in **Industrial Automation**, ideally suitable for use in **PLC, DCS, Remote I/O systems** and **drive technology**.

# Company Profile

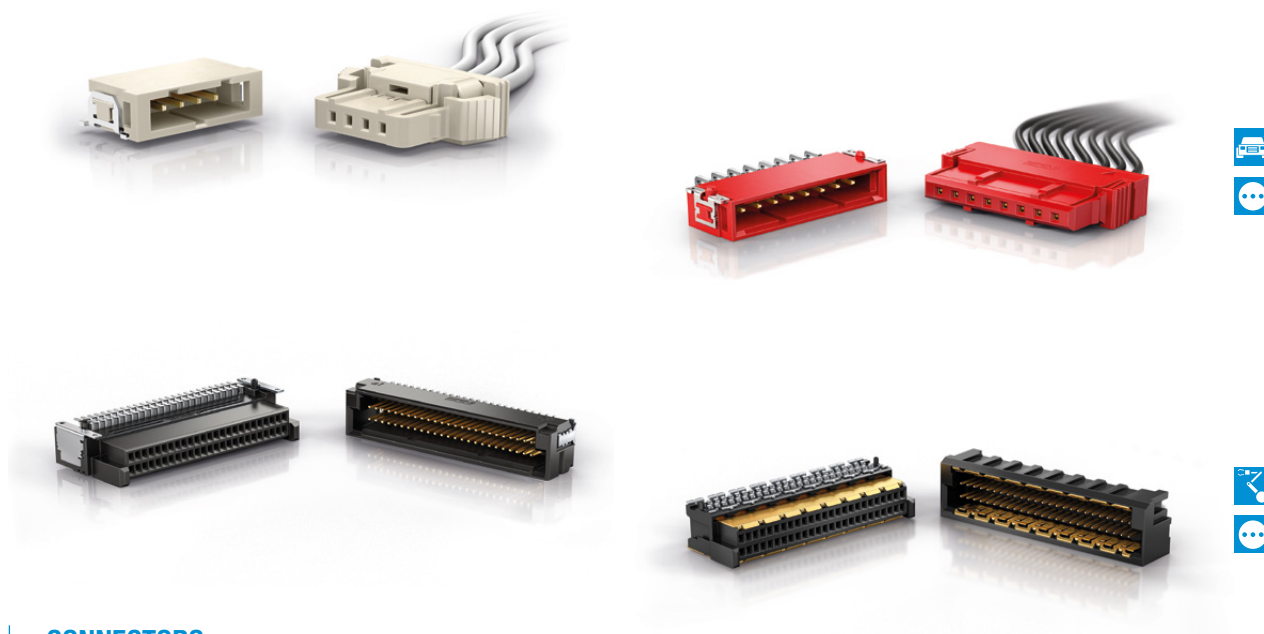
## ERNI MARKETS.



ERNI's innovative technology is able to meet the current market demand. From **communication, medical, instrumentation to other industries**, we provide complete solutions from design concept to the finished products.

# Company Profile

## ■ ERNI PRODUCTS AND SERVICES.



### CONNECTORS

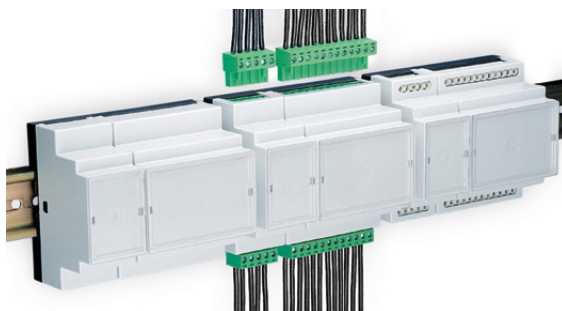
ERNI has extensive experience in connector manufacturing. Numerous well-known customers from other industries have trusted the high quality of our connectors for many years. Our connection solutions are characterized by a maximum performance with low space requirement thanks to miniaturization, high mating reliability, robustness, problem-free processing with many variant within the product families.

They overcome challenges in a wide variety of areas of the automotive industry. Vibrations, shocks, or excessive temperatures cannot influence their functional capabilities. This guarantees a constant secure contact, for example in front light systems or electromobility applications.

In industrial automation, ERNI connectors keep complex systems running. Under harsh environments of industrial applications, it is important that external influences never lead to contact interruptions. Our connections are vibration-proof and shock-resistant and ensure reliable data exchange or a continual energy supply of programmable logic controllers or drive solutions. They work extremely reliably for many years and meet the most important requirements of machine safety. Our electronic connectors transmit signals, data and high power. They are used in many different applications in other industries. ERNI is the ideal partner for high quality products.

# Company Profile

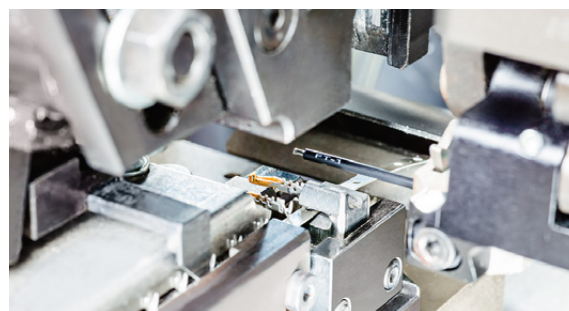
## ■ ERNI PRODUCTS AND SERVICES.



### CABLE HOUSINGS AND ENCLOSURES

Enclosures from ERNI are designed for fastening on DIN mounting rails (top-hat rails) and are available in different variants. The enclosures can be used everywhere that electronics and other construction elements must be installed securely and protected in a housing. Typical application areas are machine and system construction and industrial automation. You will find them used in robust industrial housing for example in machine controls or in robotics.

Cable housings from ERNI can be used for I/O connections of D-Sub and DIN 41612/ IEC 60603-2 connectors. The housings offer good protection of the plug and connectors from outer influences and have proven themselves in the field. Various latches, fastening options, codings and cable outlet options expand their area of use. In industrial automation they are used, for example, for bus connections or connections between I/O assemblies and the main board.



### CABLE ASSEMBLIES WITH ERNI-CONNECTORS

ERNI offers a comprehensive range of finished cable assemblies to meet your individual requirements including trimmed cables, crimped contact terminals, and complete wire harnesses. Our focus is on assembling cables utilizing solder-free connection technologies of Insulation Displacement Connections (IDC) and wire crimping. We assemble ribbon wire and discrete wire assemblies with diameters from 0.05 to 1.0 mm<sup>2</sup> [18 – 30 AWG] and offer fully automated, semi-automatic, and manual cable assembly depending on your need of prototypes, pilot series, or large-scale production.

We create cable assemblies to meet the needs and specifications of our customers by adding accessories and harness mounting features, cutting wire to the desired lengths, and assembling contacts into connector insulators. We also add braided wire sleeves, fold ribbon cables, and print the finished products with custom labels. ERNI cable assemblies are IATF and UL certified.



**CONNECTED  
BY COMPETENCE**



Find your correct contact person  
on **[erni.com/locations](https://erni.com/locations)**